



# INDOFINE Chemical Company, Inc.

121 Stryker Lane, Bldg. 30, Suite 1 • Hillsborough, NJ 08844 • U.S.A.

Phone: (908) 359-6778 • FAX: (908) 359-1179

website: [www.indofinechemical.com](http://www.indofinechemical.com)

e-mail: [chemical@indofinechemical.com](mailto:chemical@indofinechemical.com)

## CERTIFICATE OF ANALYSIS

Catalog Number: D-413

Product Name: **3',4'-DIHYDROXY- $\alpha$ -NAPTHOFLAVONE**

Lot Number: 0012279

Chemical Formula: C<sub>19</sub>H<sub>12</sub>O<sub>4</sub>

Molecular Weight: 304.29

Appearance: Pale yellow powder

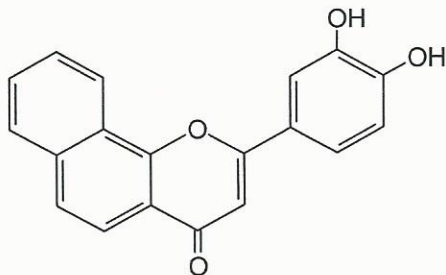
Solubility: Soluble in DMSO

TLC: Chloroform: Methanol (9:1)

NMR Spectrum: Enclosed

Storage: Store in a cool, dry place

Purity (HPLC): 96.56%





# INDOFINE Chemical Company, Inc.

121 Stryker Lane, Bldg. 30, Suite 1 • Hillsborough, NJ 08844 • U.S.A.

Phone: (908) 359-6778 • FAX: (908) 359-1179

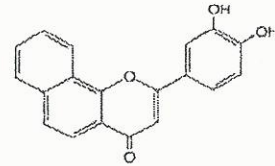
website: [www.indofinechemical.com](http://www.indofinechemical.com)

e-mail: [chemical@indofinechemical.com](mailto:chemical@indofinechemical.com)

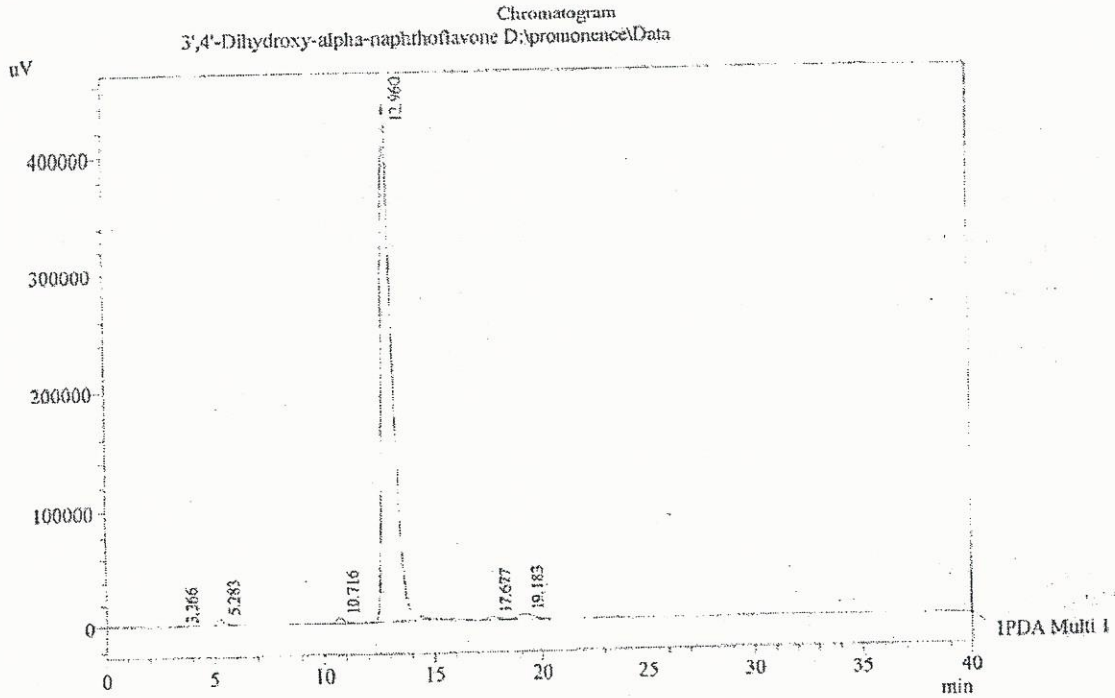
## HPLC ANALYSIS

Acquired by : Sanjeev  
 Sample Name : 3',4'-Dihydroxy-alpha-naphthoflavone  
 Sample ID : Lot No:-0012279  
 Injection Volume : 20 uL  
 Data Filename : 180812H.lcd  
 Method Filename : Linear Isoeratic.M.lcm

Catalog no.: D-413  
 Product name: 3',4'-Dihydroxy- $\alpha$ -naphthoflavone  
 Lot No.: 0012279



Column : LUNA C-18(2), (250mm x4.6mm 5.0 $\mu$ )  
 Flow : 1.000 mL/min.  
 Mobile Phase : A(30% of 0.05% TFA in water) B(70% of Methanol)  
 Diluent : Methanol



1 PDA Multi 1 / 220nm 4nm

PeakTable

Peak#	Name	Ret. Time	Area	Area %	Relative Retention Time
1	RT:3.366	3.366	1696	0.01	0.26
2	RT:5.283	5.283	126924	0.81	0.41
3	RT:10.716	10.716	125803	0.80	0.83
4	RT:12.960	12.960	15144988	96.56	1.00
5	RT:17.677	17.677	84705	0.54	1.36
6	RT:19.183	19.183	200732	1.28	1.48
Total			15684849	100.00	



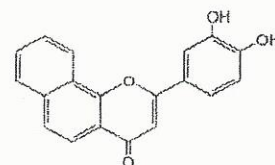
# INDOFINE Chemical Company, Inc.

121 Stryker Lane, Bldg. 30, Suite 1 • Hillsborough, NJ 08844 • U.S.A.

Phone: (908) 359-6778 • FAX: (908) 359-1179

website: [www.indofinechemical.com](http://www.indofinechemical.com)

e-mail: [chemical@indofinechemical.com](mailto:chemical@indofinechemical.com)

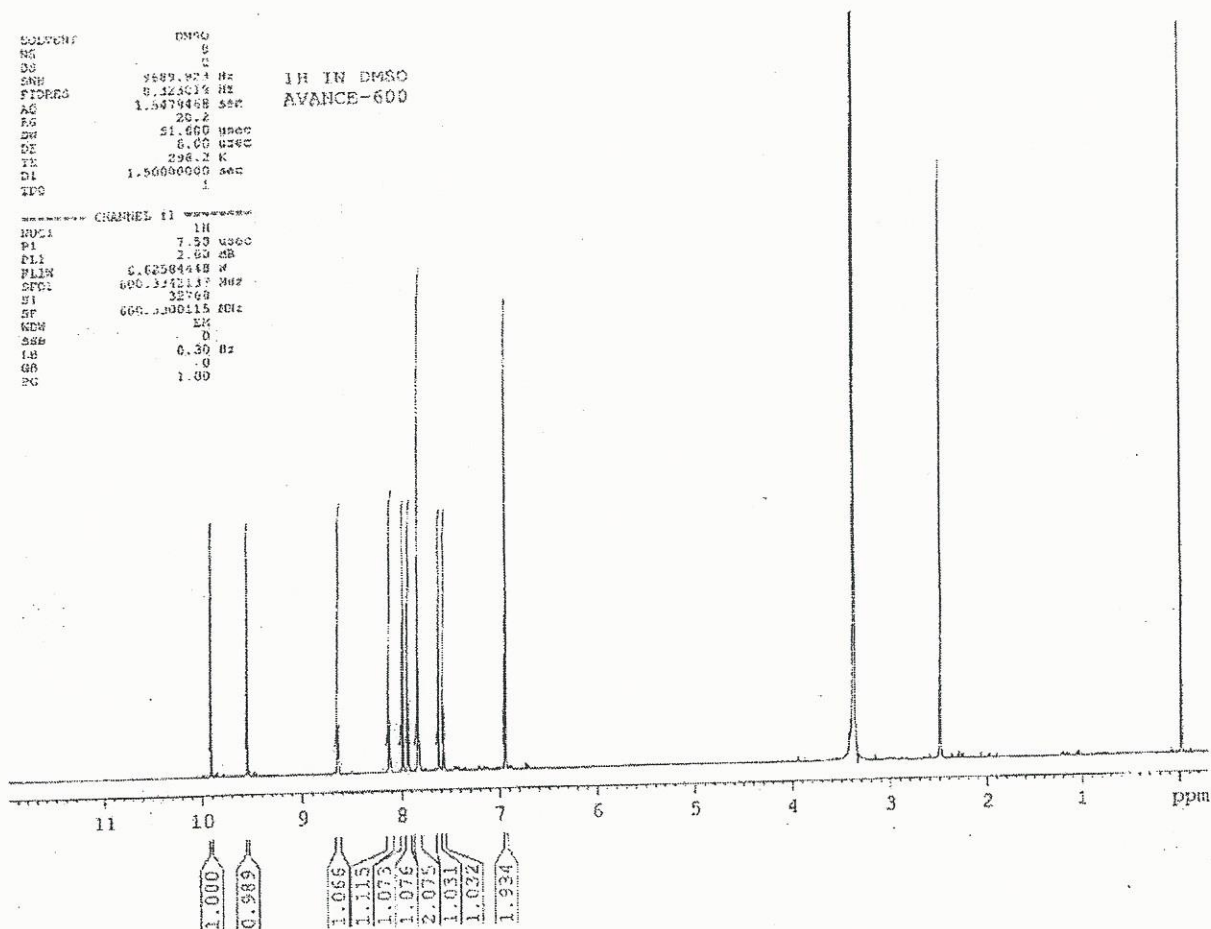


Catalog no.: D-413  
Product name: 3',4'-Dihydroxy- $\alpha$ -naphthoflavone  
Lot No.: 0012279

SOLVENT DMSO  
NS 0  
SS 0  
SNR 3689.824 Hz  
FIDRES 0.123018 Hz  
AQ 1.5479488 sec  
RG 20.2  
ZG 51.660 usec  
DE 0.00 usec  
TE 296.2 K  
D1 1.50000000 sec  
TDC 1

1H IN DMSO  
AVANCE-600

===== CHANNEL 1 =====  
NUC1 1H  
P1 7.50 usec  
PL1 2.00 dB  
FLIR 0.62504448 W  
SFO1 600.1324137 MHz  
SI 32768  
SF 600.1300115 MHz  
WDW EM  
SSB 0  
LB 0.30 Hz  
GB 0  
PC 1.00





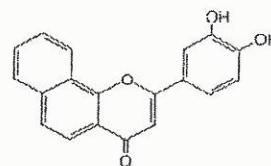
# INDOFINE Chemical Company, Inc.

121 Stryker Lane, Bldg. 30, Suite 1 • Hillsborough, NJ 08844 • U.S.A.

Phone: (908) 359-6778 • FAX: (908) 359-1179

website: [www.indofinechemical.com](http://www.indofinechemical.com)

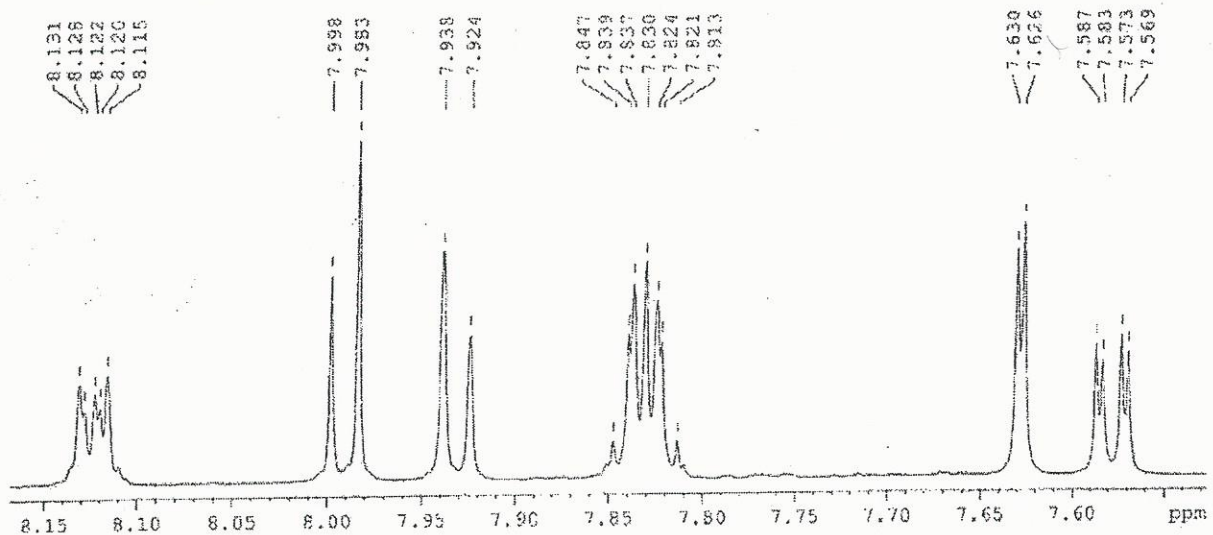
e-mail: [chemical@indofinechemical.com](mailto:chemical@indofinechemical.com)



Catalog no.: D-413  
Product name: 3',4'-Dihydroxy- $\alpha$ -naphthoflavone  
Lot No.: 0012279

SOVENT	DMSO	
NS	0	
ES	0	
SWS	9009.923 Hz	1H IN DMSO
FSW	8.325214 Hz	
AF	1.6179428 sec	AVANCE-600
RG	20.7	
DR	51.600 msec	
DE	0.00 msec	
TE	298.2 K	
DZ	1.5000000 sec	
TD	1	

----- CHANNEL f1 -----	
NUC1	1H
F1	7.50 MHz
PL1	2.00 dB
PL1W	6.62364440 dB
RF01	500.1342137 MHz
RF	12756
OR	500.1330116 MHz
QCN	0M
SCN	6
LB	0.20 Hz
GB	0
PC	1.00





# INDOFINE Chemical Company, Inc.

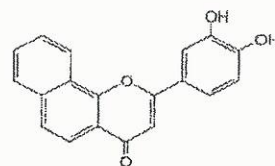
121 Stryker Lane, Bldg. 30, Suite 1 • Hillsborough, NJ 08844 • U.S.A.

Phone: (908) 359-6778 • FAX: (908) 359-1179

website: [www.indofinechemical.com](http://www.indofinechemical.com)

e-mail: [chemical@indofinechemical.com](mailto:chemical@indofinechemical.com)

Catalog no.: D-413  
Product name: 3',4'-Dihydroxy- $\alpha$ -naphthoflavone  
Lot No.: 0012279



SOLVENT DMSO  
NS 8  
DS 0  
FMR 9899.923 Hz  
FIDRES 0.323019 Hz  
AQ 1.5472468 sec  
RG 20.2  
CW 21.600 MHz  
CF 0.00 MHz  
TK 298.2 K  
D1 1.5000000 sec  
TD0 1

1H IN DMSO  
AVANCE-600

----- CHANNEL f1 -----  
NUC1 1H  
P1 7.50 MHz  
PL1 2.60 dB  
PL12 6.62681440 W  
SFO1 600.3342137 MHz  
SI 32768  
SF 600.3300115 MHz  
WDW FM  
SSB 0  
LB 0.30 Hz  
GB 0  
PC 1.00

